

IHS ENERGY GROUP

Information Services

GLOBAL EXPLORATION & PRODUCTION SERVICE

GUYANA

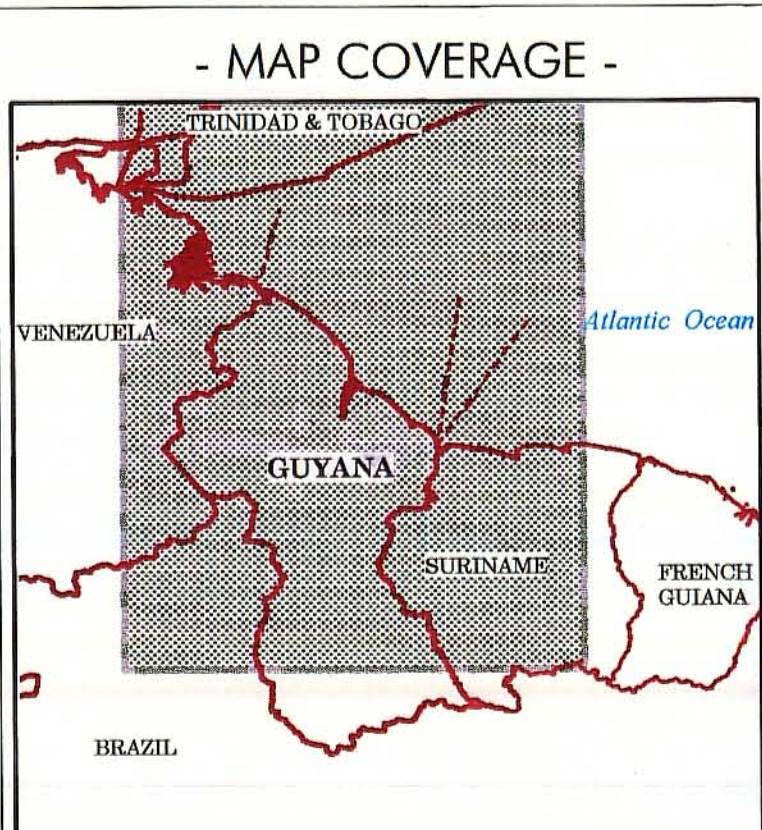
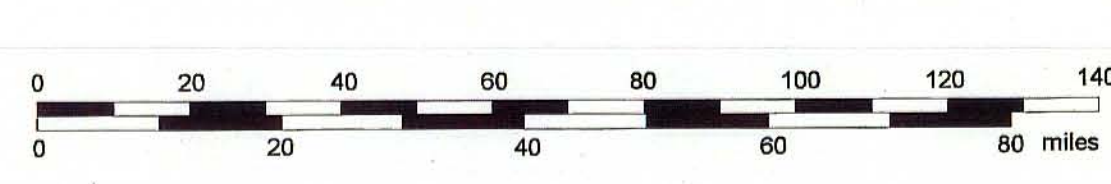
SCALE: 1/1 000 000 NOVEMBER 2001 REF: GY01F1GEN DB

DATA: 50' South Amer 89 Guyana
 PROJECTION: UTM
 CENTRAL MERIDIAN: 57 deg 00' W Greenwich
 LATITUDE OF ORIGIN: 2 deg 00' 00.000 N
 SCALE FACTOR: 0.9996

www.ihsenergy.com

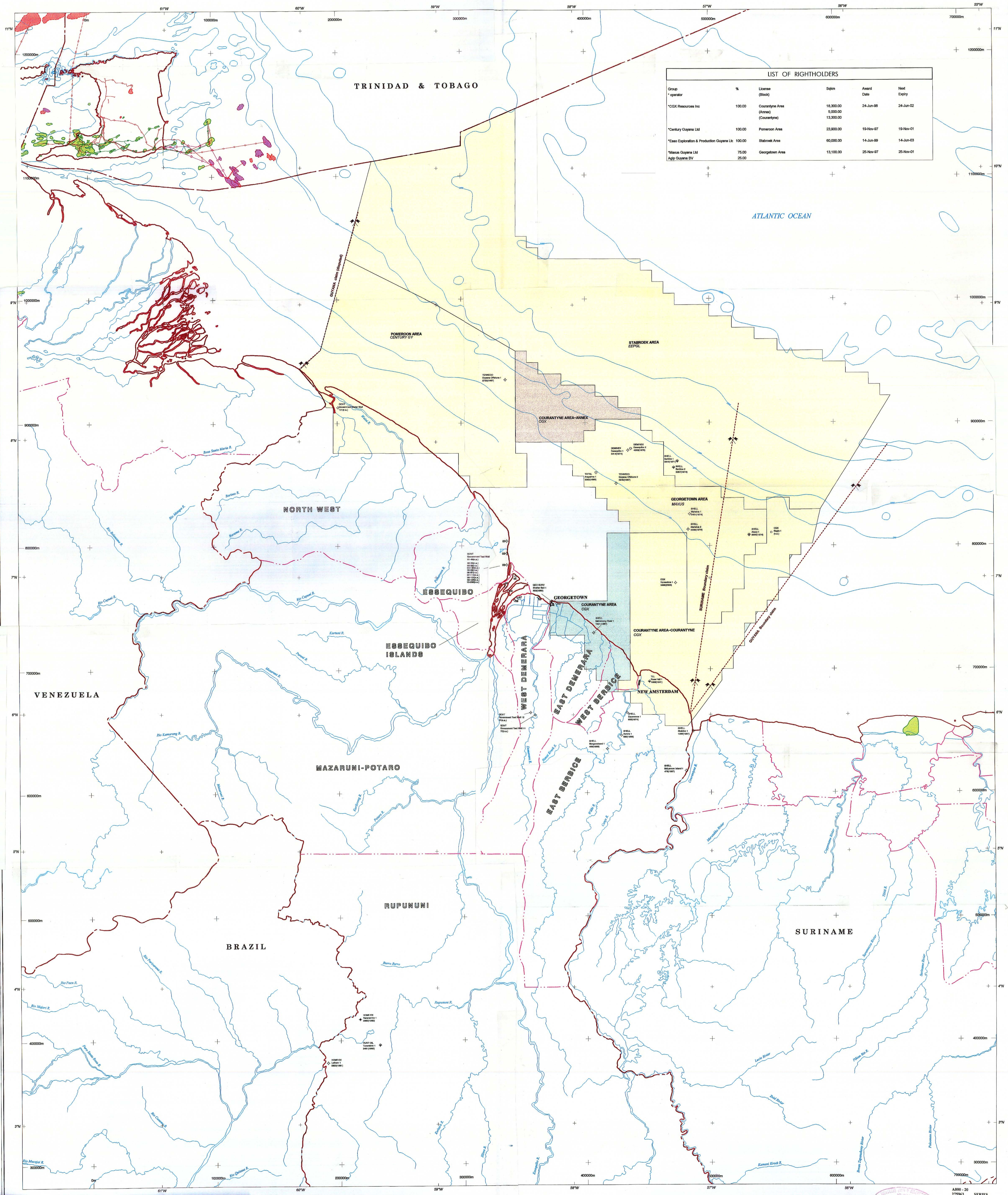
© Petroleum Geo Services, Houston, TX 77001 © Integrated Exploration and Development Database Unit Ltd (a subsidiary of IHS Energy Group) 1998

This map represents the status of Carto Data and IRIS21 databases on 10-DEC-2001. It is not an authority on the delineation of international boundaries.



LEGEND

EXPLORATORY WELLS	TYPE	FIELDS	STATUS	FIELD NAME	LICENSES	GEOGRAPHY	INSTALLATIONS
○ Ongoing	● Oil	○ Oil field	○ Producing	ELMORSON	■ Licensed area	— Coastline	○ Gas pipeline
○ Suspended	● Gas	○ Gas field	○ Non-producing	BUKAT	■ Production lease	— International boundary	○ Condensate pipeline
○ Abandoned	● Oil/Gas	○ Gas field	○ Disputed	ECOPEPETROL	■ Block name	— Province boundary	○ Production pipeline
○ Unknown type	● Gas/Condensate field	○ Gas/Condensate field			■ Block offered	— Chain	○ Water pipeline
○ Junked	● Gas and Condensate				■ Application	— In dispute	○ Pipeline planned or under construction
					■ Recently awarded	○ Saltmarsh (in red)	○ Tanker terminal
					■ Recently relinquished	○ City	○ Gas plant
							○ Platform



LIST OF RIGHTHOLDERS

Group	%	License (Block)	50km	Award Date	Next Expiry
*operator					
*CGX Resources Inc	100.00	Courantyne Area (Annex) (Courantyne)	18,300.00 5,000.00 13,300.00	24-Jun-98	24-Jun-02
*Century Guyana Ltd	100.00	Pomeroon Area	23,900.00	19-Nov-97	19-Nov-01
*Esso Exploration & Production Guyana Ltd	100.00	Stabroek Area	60,000.00	14-Jun-99	14-Jun-03
*Mesa Guyana Ltd	75.00	Georgetown Area	13,100.00	25-Nov-97	25-Nov-01
App Guyana BV	25.00				