

**Suriname River Entrance, Surinam**

Inferred Hourly Heights for October, 2004  
NOAA, National Ocean Service

Hours in Local Time

Day	Hours 0/12	Hours 1/13	Hours 2/14	Hours 3/15	Hours 4/16	Hours 5/17	Hours 6/18	Hours 7/19	Hours 8/20	Hours 9/21	Hours 10/22	Hours 11/23
1	0.34	1.08	2.61	4.53	6.35	7.61	7.99	7.41	6.04	4.23	2.47	1.21
	0.80	1.34	2.68	4.48	6.27	7.60	8.10	7.66	6.38	4.59	2.72	1.25
2	0.53	0.75	1.82	3.47	5.29	6.80	7.62	7.55	6.64	5.14	3.44	2.00
	1.19	1.23	2.11	3.60	5.30	6.79	7.67	7.71	6.92	5.48	3.75	2.15
3	1.09	0.81	1.37	2.59	4.18	5.72	6.82	7.20	6.80	5.74	4.31	2.90
	1.87	1.50	1.89	2.95	4.39	5.84	6.94	7.40	7.09	6.11	4.69	3.17
4	1.93	1.26	1.33	2.08	3.31	4.72	5.94	6.68	6.74	6.17	5.12	3.88
	2.78	2.11	2.06	2.61	3.64	4.88	6.00	6.73	6.88	6.42	5.46	4.23
5	3.04	2.16	1.80	2.03	2.75	3.78	4.86	5.73	6.17	6.08	5.53	4.66
	3.70	2.92	2.53	2.61	3.15	4.01	4.96	5.77	6.24	6.24	5.79	5.00
6	4.04	3.15	2.52	2.30	2.52	3.09	3.89	4.71	5.36	5.68	5.61	5.20
	4.57	3.88	3.31	3.02	3.08	3.47	4.11	4.83	5.45	5.83	5.87	5.57
7	4.98	4.25	3.53	2.97	2.71	2.79	3.17	3.76	4.43	5.02	5.41	5.49
	5.28	4.83	4.25	3.70	3.32	3.20	3.38	3.82	4.41	5.01	5.48	5.69
8	5.60	5.20	4.58	3.88	3.25	2.82	2.70	2.91	3.40	4.06	4.74	5.29
	5.58	5.54	5.18	4.60	3.94	3.38	3.05	3.04	3.38	3.99	4.71	5.37
9	5.80	5.89	5.58	4.94	4.11	3.30	2.68	2.41	2.56	3.11	3.94	4.84
	5.60	6.04	6.05	5.60	4.83	3.92	3.11	2.60	2.53	2.95	3.74	4.72
10	5.63	6.24	6.39	6.00	5.14	4.03	2.94	2.13	1.80	2.06	2.86	4.00
	5.21	6.18	6.67	6.55	5.84	4.72	3.48	2.43	1.86	1.91	2.59	3.73
11	5.05	6.19	6.89	6.94	6.30	5.12	3.69	2.39	1.52	1.32	1.86	3.02
	4.50	5.94	6.96	7.30	6.87	5.78	4.29	2.79	1.67	1.20	1.53	2.60
12	4.13	5.72	6.98	7.58	7.35	6.33	4.79	3.11	1.72	0.97	1.06	2.00
	3.53	5.28	6.79	7.67	7.70	6.84	5.31	3.50	1.87	0.83	0.64	1.39
13	2.87	4.72	6.47	7.66	7.99	7.36	5.94	4.07	2.26	0.95	0.50	1.03
	2.41	4.28	6.18	7.60	8.19	7.79	6.48	4.59	2.60	1.02	0.24	0.47
14	1.65	3.50	5.53	7.24	8.19	8.14	7.09	5.32	3.28	1.51	0.46	0.41
	1.39	3.14	5.22	7.09	8.26	8.44	7.56	5.84	3.71	1.70	0.32	-0.09
15	0.57	2.14	4.22	6.29	7.81	8.40	7.92	6.50	4.52	2.50	0.96	0.31
	0.72	2.09	4.06	6.14	7.78	8.57	8.29	7.00	5.02	2.84	0.99	-0.06
16	-0.06	0.98	2.79	4.93	6.84	8.05	8.25	7.42	5.80	3.81	1.98	0.78
	0.54	1.31	2.91	4.91	6.81	8.11	8.49	7.84	6.30	4.27	2.23	0.68
17	0.01	0.36	1.61	3.45	5.42	7.01	7.84	7.70	6.68	5.05	3.25	1.75
	0.96	1.09	2.10	3.73	5.58	7.16	8.07	8.09	7.20	5.61	3.71	1.95
18	0.75	0.41	0.96	2.24	3.94	5.63	6.89	7.40	7.06	6.01	4.53	3.01
	1.87	1.40	1.74	2.79	4.28	5.85	7.08	7.67	7.48	6.54	5.10	3.47
19	2.05	1.18	1.04	1.62	2.77	4.19	5.54	6.49	6.80	6.44	5.53	4.32
	3.13	2.28	2.00	2.35	3.24	4.45	5.66	6.59	6.99	6.78	6.00	4.83
20	3.54	2.43	1.74	1.63	2.08	2.97	4.08	5.15	5.92	6.20	5.97	5.32
	4.43	3.53	2.86	2.60	2.81	3.43	4.32	5.25	5.99	6.37	6.29	5.77
21	4.91	3.91	2.99	2.33	2.10	2.32	2.92	3.77	4.67	5.42	5.84	5.85
	5.48	4.82	4.06	3.39	2.97	2.93	3.26	3.90	4.68	5.42	5.93	6.10
22	5.86	5.24	4.39	3.48	2.72	2.27	2.24	2.63	3.35	4.24	5.11	5.74
	6.00	5.83	5.29	4.50	3.68	3.03	2.72	2.82	3.34	4.15	5.05	5.81
23	6.24	6.24	5.75	4.89	3.85	2.89	2.22	2.00	2.30	3.07	4.12	5.20
	6.05	6.48	6.36	5.73	4.73	3.62	2.69	2.16	2.19	2.78	3.80	4.98
24	6.03	6.68	6.76	6.22	5.18	3.91	2.71	1.87	1.60	1.99	2.95	4.24
	5.55	6.55	6.99	6.76	5.89	4.60	3.22	2.11	1.54	1.66	2.47	3.76
25	5.20	6.42	7.11	7.10	6.35	5.06	3.56	2.21	1.37	1.25	1.90	3.17
	4.74	6.21	7.21	7.49	6.96	5.74	4.14	2.57	1.43	1.00	1.41	2.55
26	4.13	5.76	7.02	7.59	7.31	6.24	4.66	2.98	1.62	0.94	1.12	2.13
	3.71	5.45	6.91	7.72	7.65	6.72	5.16	3.36	1.76	0.78	0.66	1.44
27	2.93	4.73	6.41	7.52	7.78	7.13	5.74	3.97	2.29	1.13	0.81	1.42
	2.81	4.62	6.39	7.66	8.10	7.59	6.24	4.40	2.52	1.07	0.42	0.72
28	1.90	3.66	5.54	7.06	7.85	7.69	6.63	4.95	3.10	1.57	0.77	0.90
	1.94	3.64	5.54	7.16	8.09	8.07	7.10	5.41	3.44	1.67	0.54	0.34
29	1.11	2.63	4.54	6.33	7.55	7.89	7.28	5.89	4.09	2.36	1.16	0.81
	1.41	2.81	4.64	6.44	7.74	8.20	7.70	6.35	4.50	2.59	1.11	0.42
30	0.69	1.81	3.51	5.34	6.85	7.64	7.52	6.55	4.99	3.26	1.82	1.06
	1.18	2.16	3.74	5.52	7.03	7.89	7.88	6.98	5.43	3.59	1.93	0.86
31	0.63	1.27	2.61	4.30	5.92	7.05	7.40	6.90	5.70	4.12	2.60	1.53
	1.21	1.72	2.94	4.55	6.13	7.28	7.70	7.29	6.14	4.55	2.90	1.59

**Interpolated Tide Level  
based on Predicted  
Tide Table**

11:00            3.17 ft  
10:00            -1.90 ft  
-----  
tide change  
in one hour    1.27 ft

time image was acquired  
10:02:34

or 2 min 34 sec past 10:00

2 min 34 sec = .04278 hrs

1.27 feet/hr (0.04278 hrs) = 0.05 ft

1.9 ft + 0.05 ft = **1.95 ft**

SPOT Imagery was acquired on October 25, 2004 at 14:02:34 GMT or **10:02:34 local time in Sarinam**. At the time the imagery was acquired the predicted tide was 1.95 feet above LML.

Figure 4

### Map Symbology

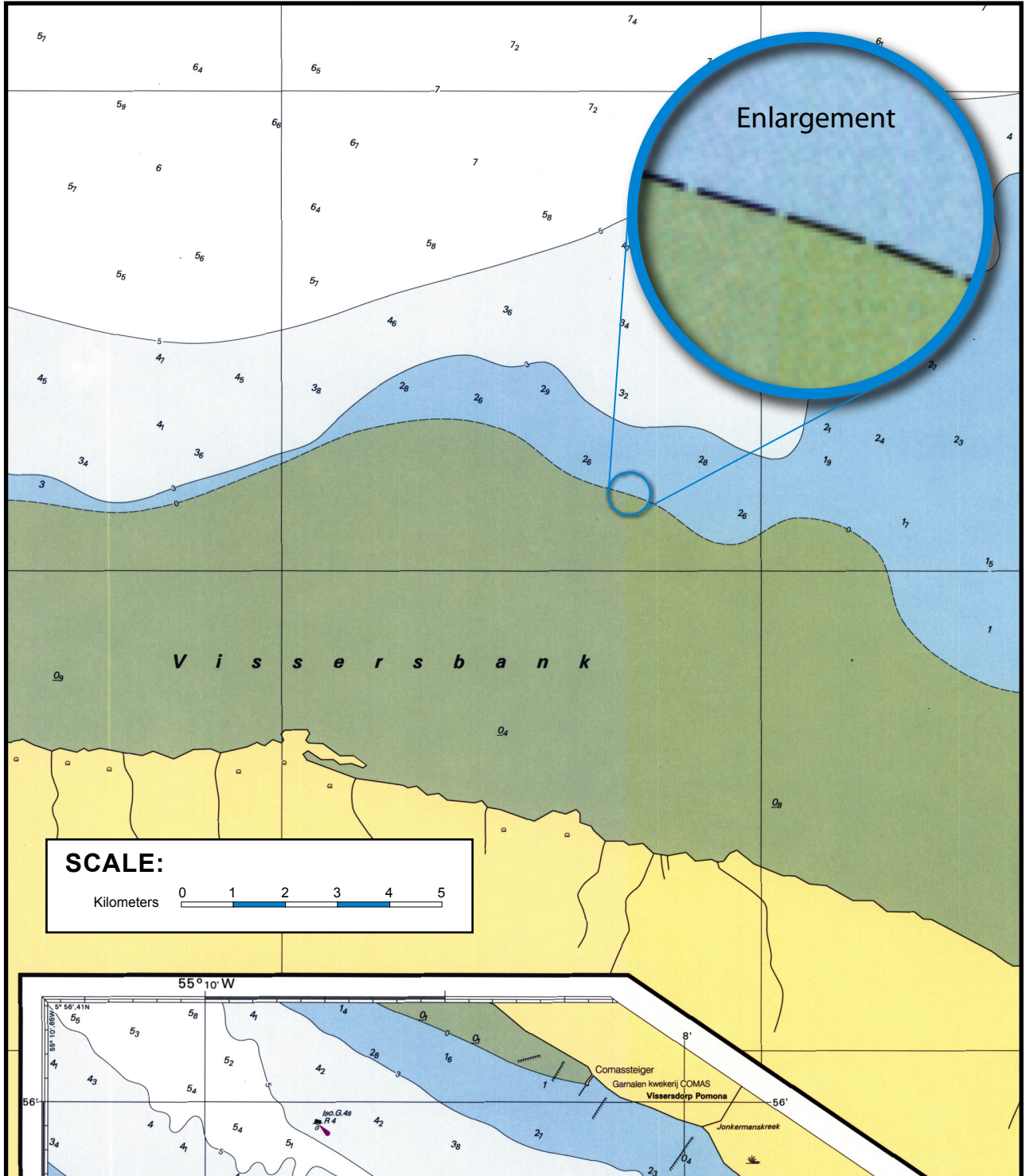


Figure 5