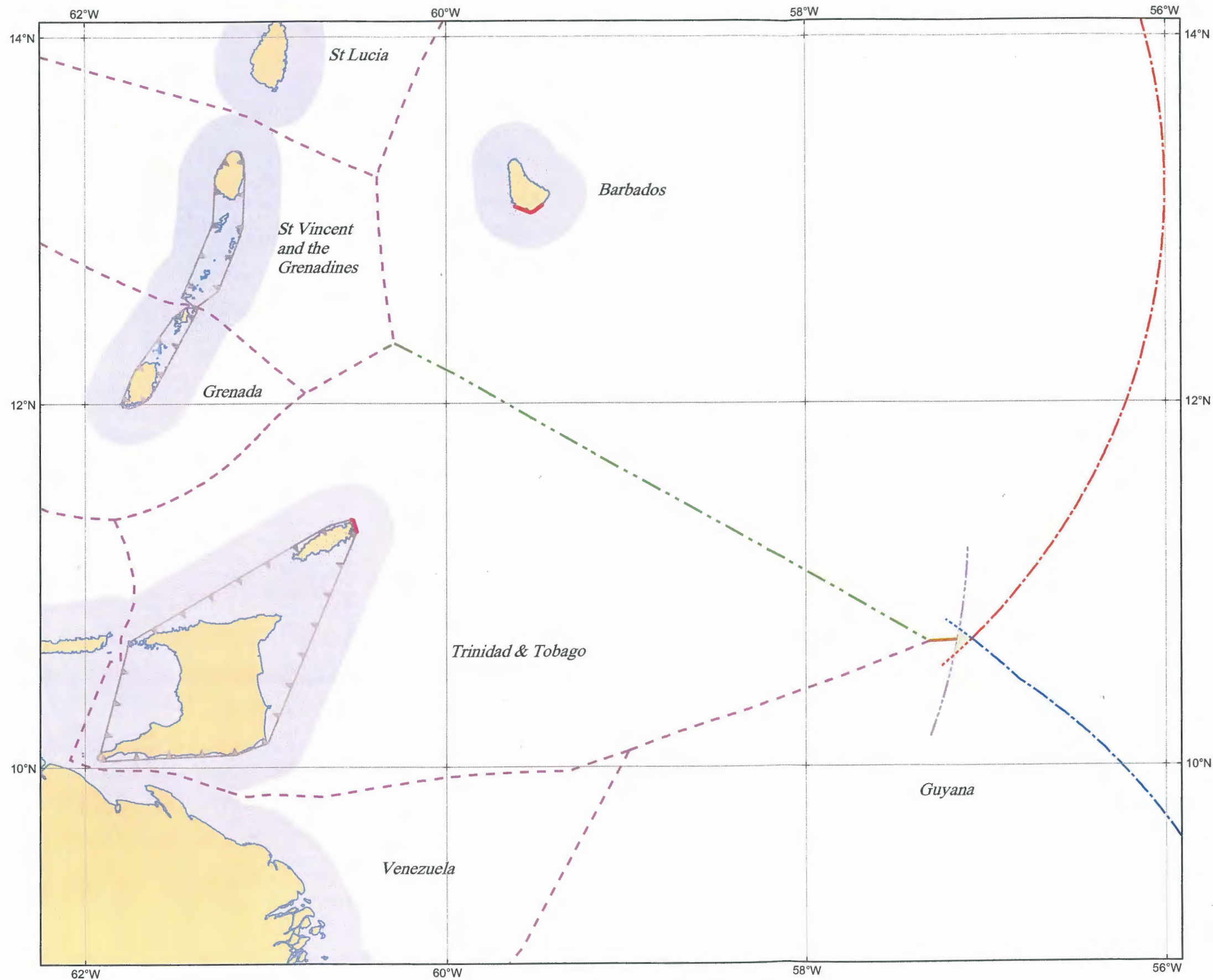


Map 6

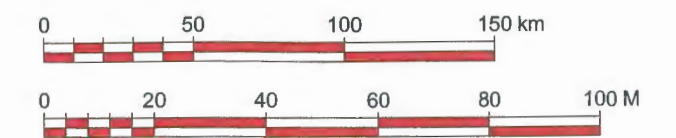
The Barbados - Trinidad and Tobago median line in relation to the 200 nautical mile arcs from Barbados, Trinidad and Tobago and Guyana, and the Barbados - Guyana EEZ Co-operation Zone.



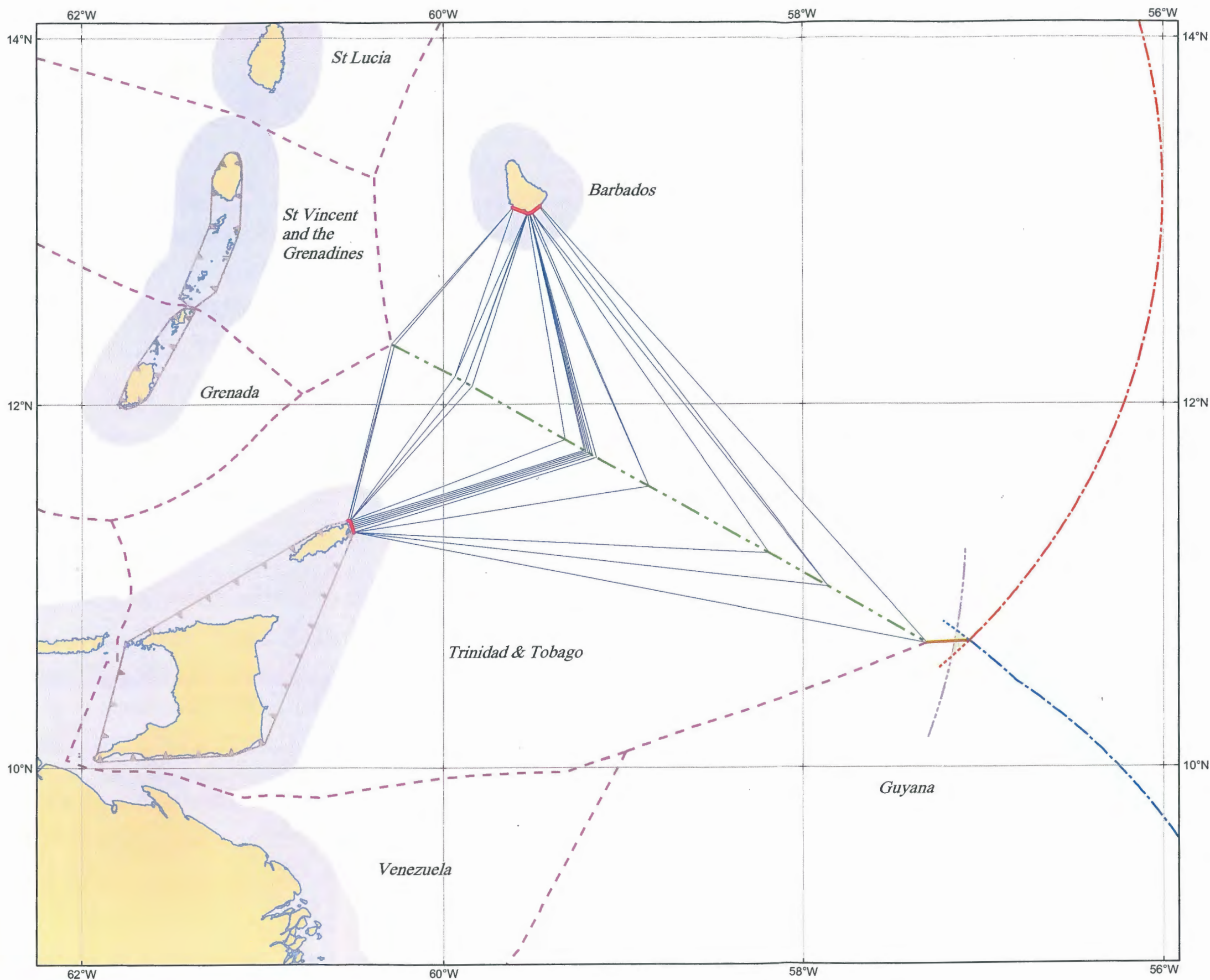
Legend

- - - Barbados - Trinidad and Tobago median line
- Barbados - Guyana median line
- - - Other calculated median lines
- Relevant lengths of baseline that contribute to a median line calculation
- - - 200M arc from Barbados baseline
- - - 200M arc from Guyana baseline
- - - 200M arc drawn from Trinidad and Tobago archipelagic baseline
- - - Barbados 200M EEZ limit
- - - Guyana 200M EEZ limit
- ▲— Archipelagic baseline
- Barbados - Guyana EEZ Co-operation Zone
- Territorial sea

Scale 1 : 2,500,000
 [at 12° N when printed at A3 size]
 Projection: Mercator
 Datum: WGS 84



Map 7

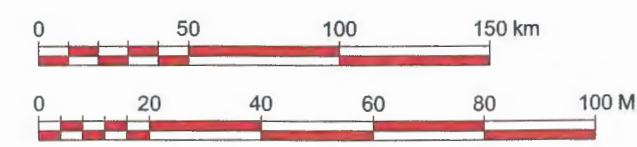


The median line with construction lines which connect each baseline point contributing to the median line to the corresponding turning point on the median line.

Legend

- - - Barbados - Trinidad and Tobago median line [see footnote #]
- Construction lines indicating the basepoints used in calculating this median line
- Barbados - Guyana median line
- - - Other calculated median lines
- - - 200M arc from Barbados baseline
- - - 200M arc from Guyana baseline
- - - 200M arc drawn from Trinidad and Tobago archipelagic baseline
- - - Barbados 200M EEZ limit
- - - Guyana 200M EEZ limit
- ▲— Archipelagic baseline
- Relevant lengths of baseline containing points that contribute to a median line calculation
- Barbados - Guyana EEZ Co-operation Zone
- Territorial sea

Scale 1 : 2,500,000
 [at 12° N when printed at A3 size]
 Projection: Mercator
 Datum: WGS 84







The Barbados - Trinidad and Tobago median line appears straight but has a large number of turning points

Map 8

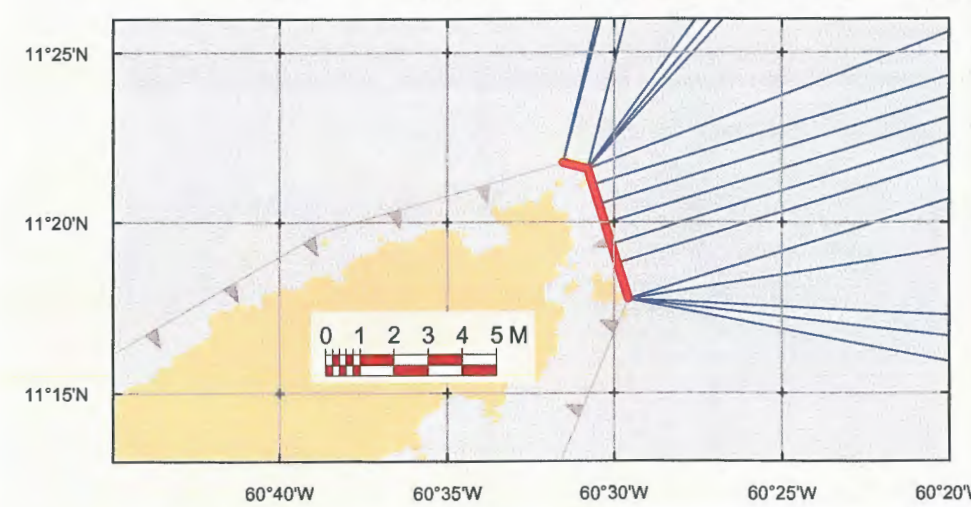
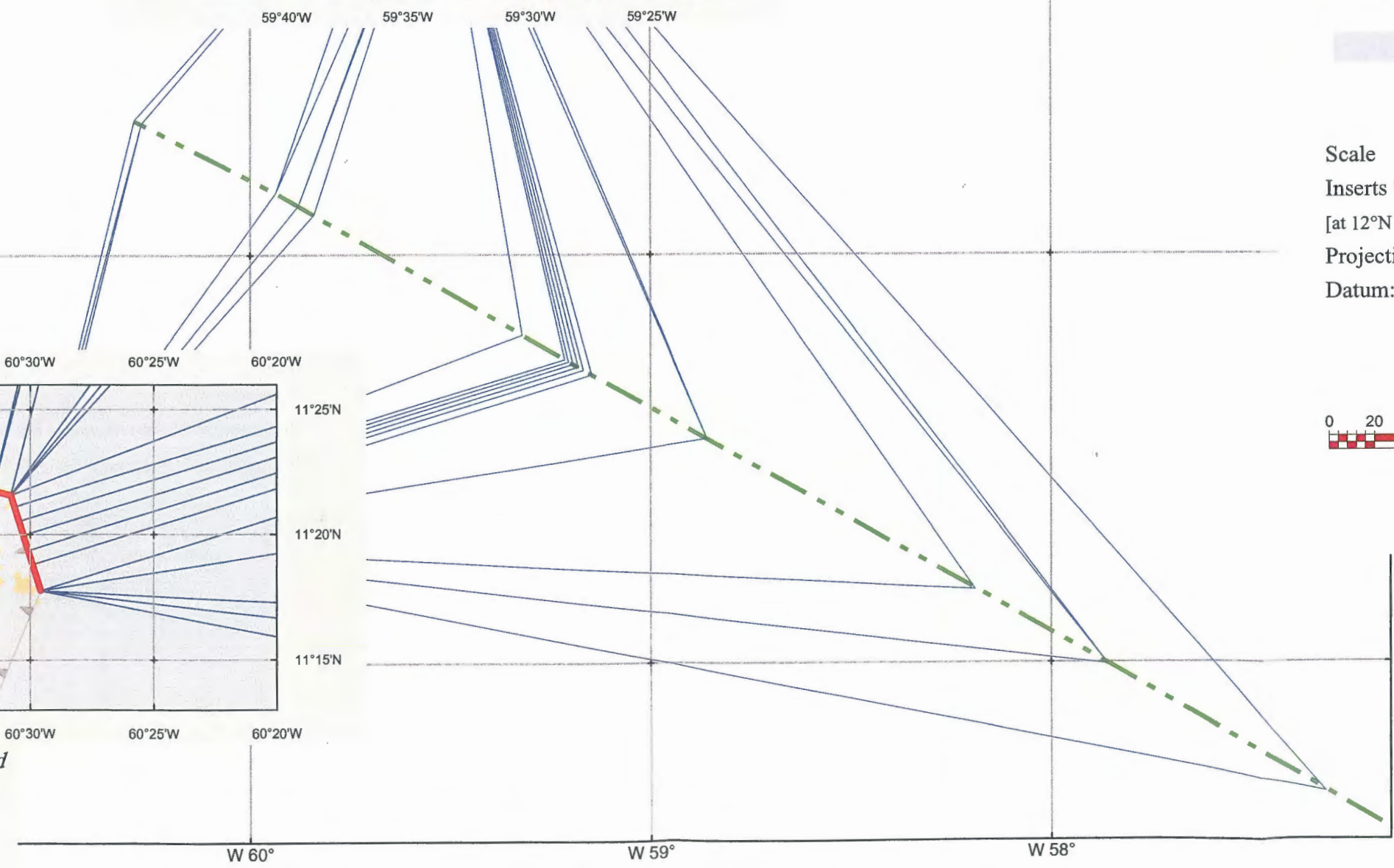
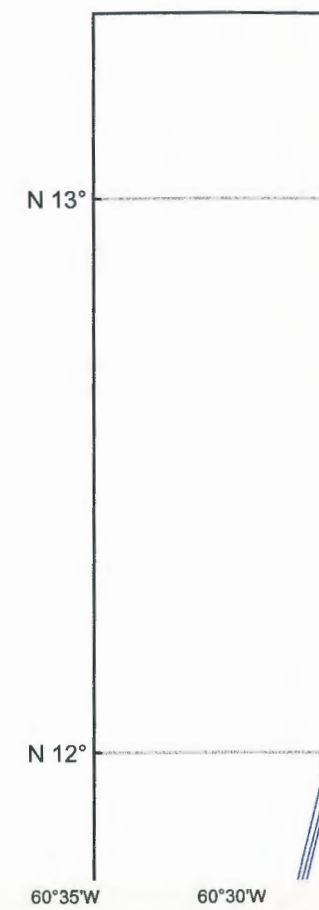
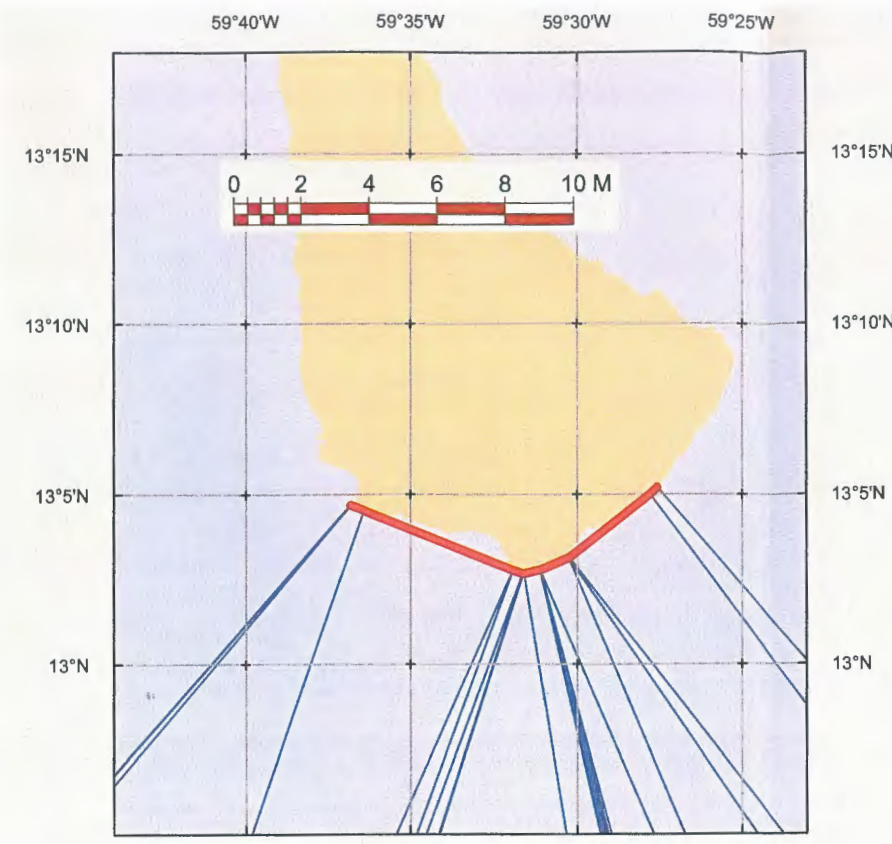
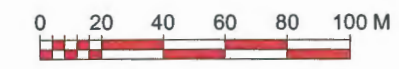
Points along the southern coast of Barbados that contribute to the median line are joined by the line shown here. Line length is 10.202M.

The median line construction with close-up insets of the relevant portions of contributing coast or baseline.

Legend

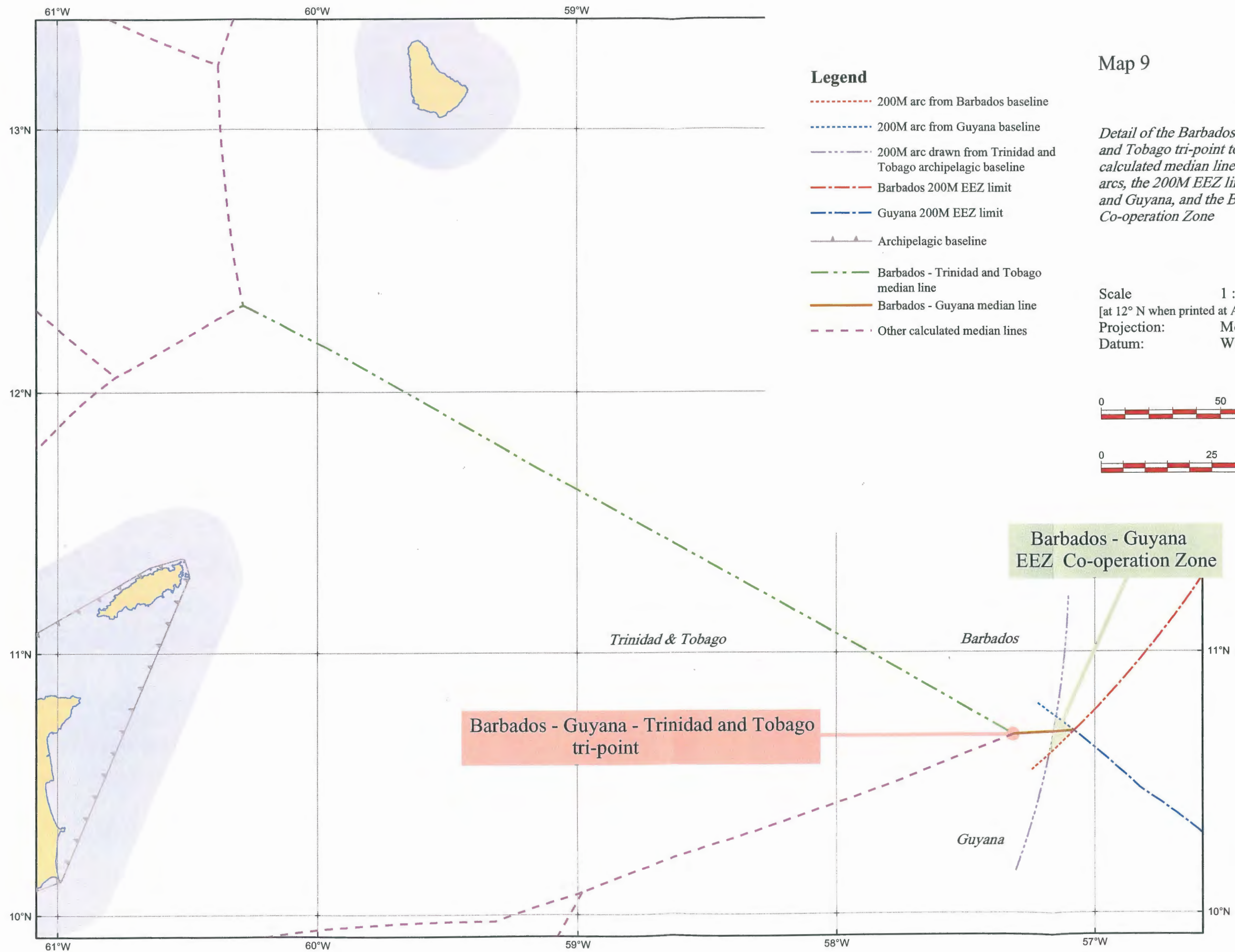
-  Median line construction lines connecting base points to median line turning points
-  Baseline elements that contribute to the calculated median line
-  Barbados - Trinidad and Tobago median line
-  Territorial sea

Scale 1:1,500,000
 Inserts [approx] 1 : 400,000
 [at 12°N when printed at A3]
 Projection: Mercator
 Datum: WGS 84



Only points along this NE leg of the Trinidad and Tobago archipelagic baseline can make a contribution to a calculated median line. Total length of contributing baseline is 4.737M.

NOTE Land areas shown on this illustration are taken from small scale models of the world, precise base points are not shown and land areas are for illustrative purposes only. All line and point detail is calculated using precise positions for base points taken from large-scale charts.



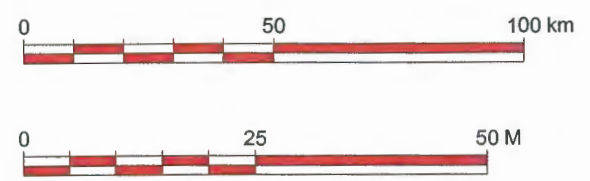
Legend

- - - 200M arc from Barbados baseline
- - - 200M arc from Guyana baseline
- - - 200M arc drawn from Trinidad and Tobago archipelagic baseline
- - - Barbados 200M EEZ limit
- - - Guyana 200M EEZ limit
- ▲- Archipelagic baseline
- - - Barbados - Trinidad and Tobago median line
- - - Barbados - Guyana median line
- - - Other calculated median lines

Map 9

Detail of the Barbados - Guyana - Trinidad and Tobago tri-point together with all calculated median lines, selected 200M arcs, the 200M EEZ limits for Barbados and Guyana, and the Barbados - Guyana EEZ Co-operation Zone

Scale 1 : 1,500,000
 [at 12° N when printed at A3 size]
 Projection: Mercator
 Datum: WGS 84



Barbados - Guyana - Trinidad and Tobago tri-point

Barbados - Guyana EEZ Co-operation Zone

Trinidad & Tobago

Barbados

Guyana

13°N
12°N
11°N
10°N

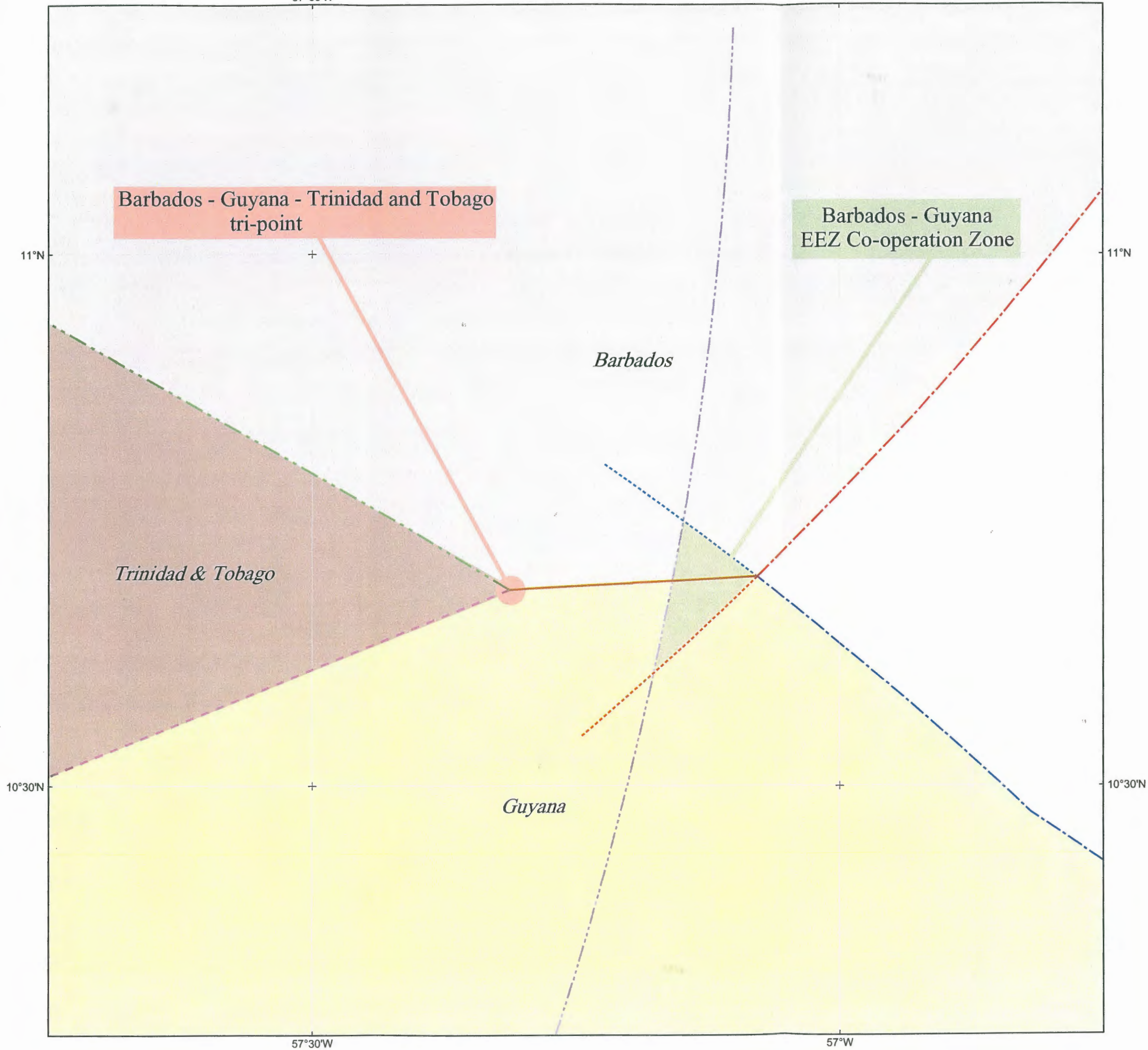
61°W
60°W
59°W
58°W
57°W

57°30'W

57°W

Map 10

Close-up of the Barbados - Guyana EEZ Co-operation Zone.



Barbados - Guyana - Trinidad and Tobago tri-point

Barbados - Guyana EEZ Co-operation Zone

Barbados

Trinidad & Tobago

Guyana

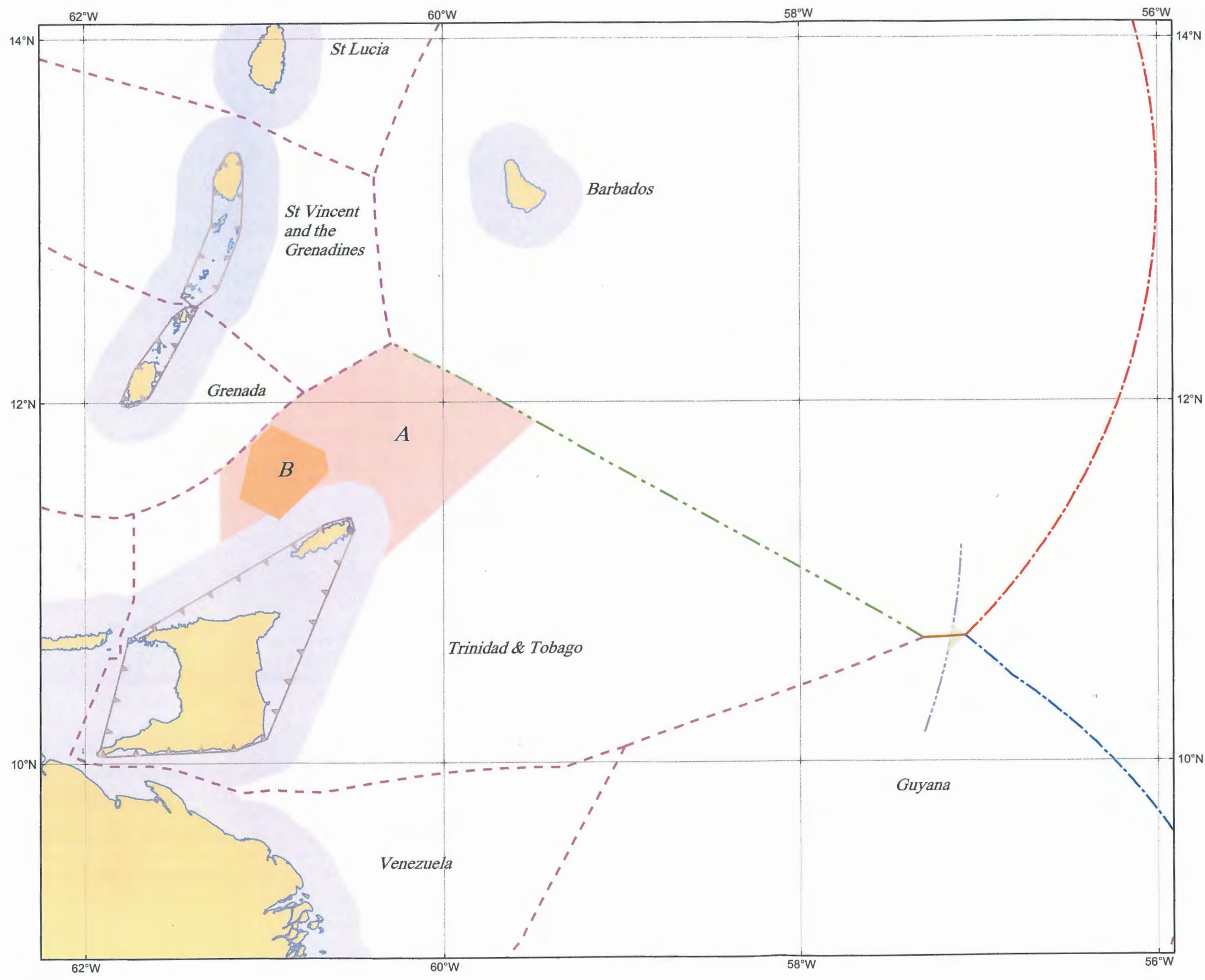
Legend

- - - Barbados - Trinidad and Tobago median line
- Barbados - Guyana median line
- - - Other calculated median lines
- · - · 200M arc from Barbados baseline
- · - · 200m arc from Guyana baseline
- · - · 200M arc from Trinidad baseline
- - - 200M EEZ limit for Barbados
- - - 200M EEZ limit for Guyana

Scale: 1: 400,000
 [at 12° N when printed at A3 size]
 Projection: Mercator
 Datum: WGS 84



Map 11



Area A is the approximate extent of the traditional Barbadian fishery off the northwest, north and northeast coasts of Tobago.

Area B encompasses all reported positions of Barbadian fishing boat arrests during the period 1994 - 2004.

Legend

- - - Barbados - Trinidad and Tobago median line
- Barbados - Guyana median line
- - - Other calculated median lines
- - - - Theoretical 200M arc drawn from Trinidad and Tobago archipelagic baseline
- - - Barbados 200M EEZ limit
- - - Guyana 200M EEZ limit
- ▲ Archipelagic baseline
- Territorial sea
- Barbados - Guyana EEZ Co-operation Zone
- A** Area of traditional Barbadian fisheries
- B** Area of reported arrests of Barbadian fishing boats

Scale 1 : 2,500,000
 [at 12° N when printed at A3 size]
 Projection: Mercator
 Datum: WGS 84

