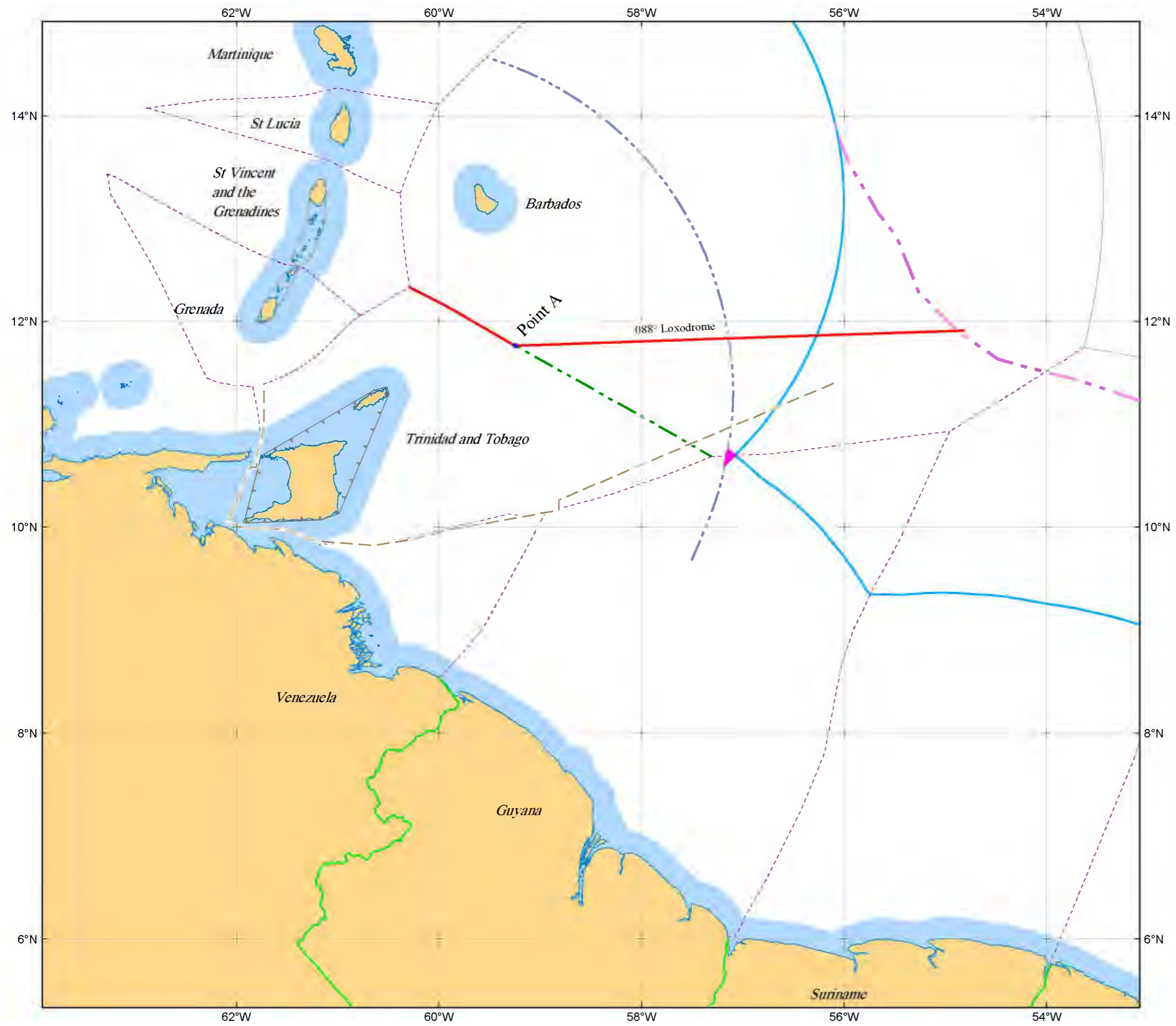


Map 1

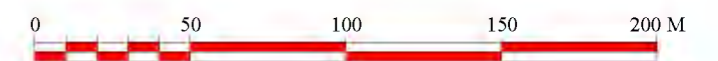


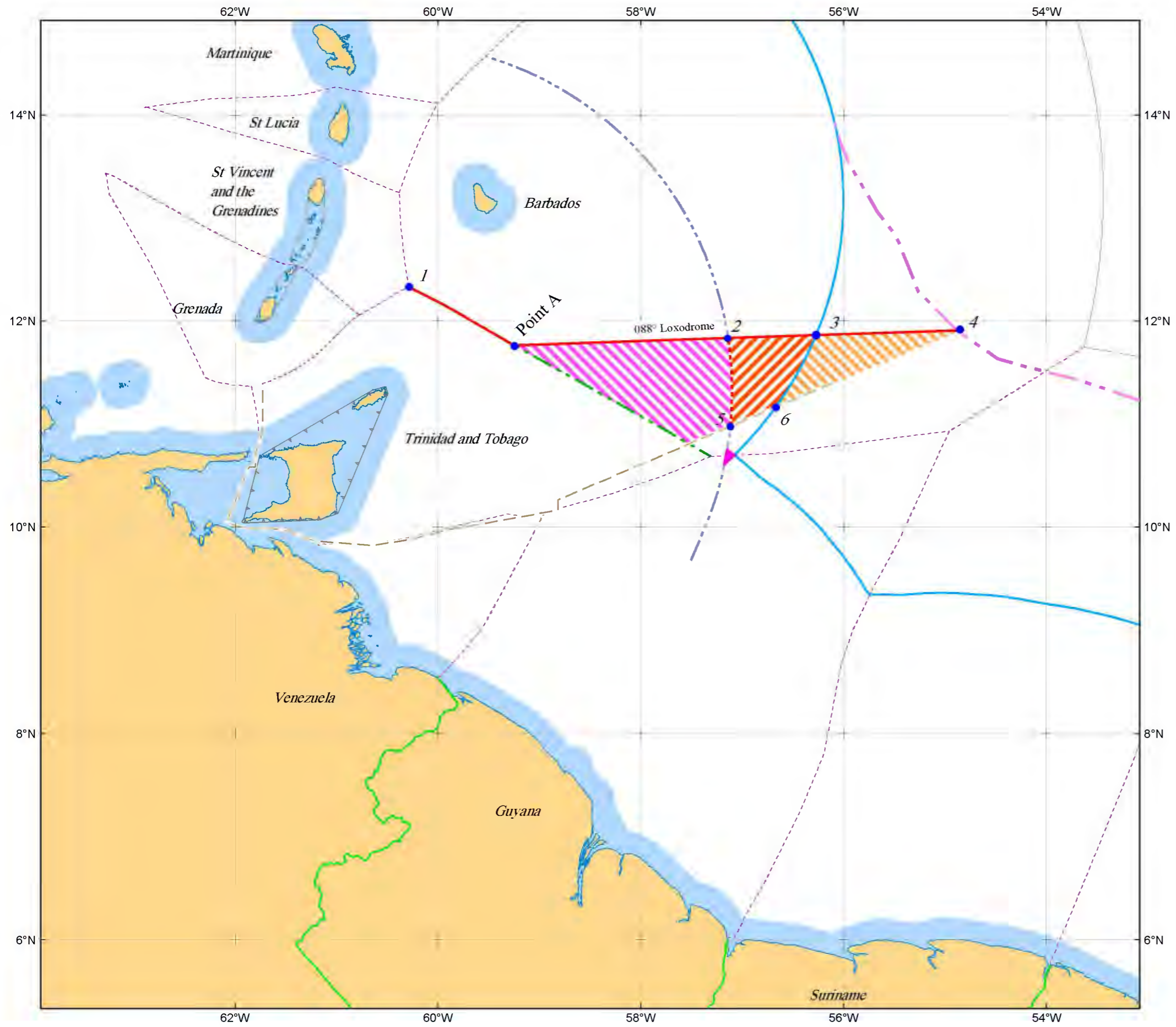
Map of Trinidad and Tobago's claim line as shown by Trinidad and Tobago in its Counter Memorial

Legend

- Trinidad and Tobago's claim line
- Trinidad - Venezuela Agreement line
- Barbados - Trinidad and Tobago median line
- Other calculated median lines
- Archipelagic baselines
- 200M EEZ limits
- 200M arc drawn from the archipelagic baseline of Trinidad and Tobago
- ECS limit
- 350M extended continental shelf cut-off
- Barbados - Guyana EEZ Co-operation Zone

Scale: 1 : 4,500,000  
[at 12°N when printed at A3 size]  
Projection: Mercator  
Datum: WGS 84





Map showing Trinidad and Tobago's three claims north of the median line

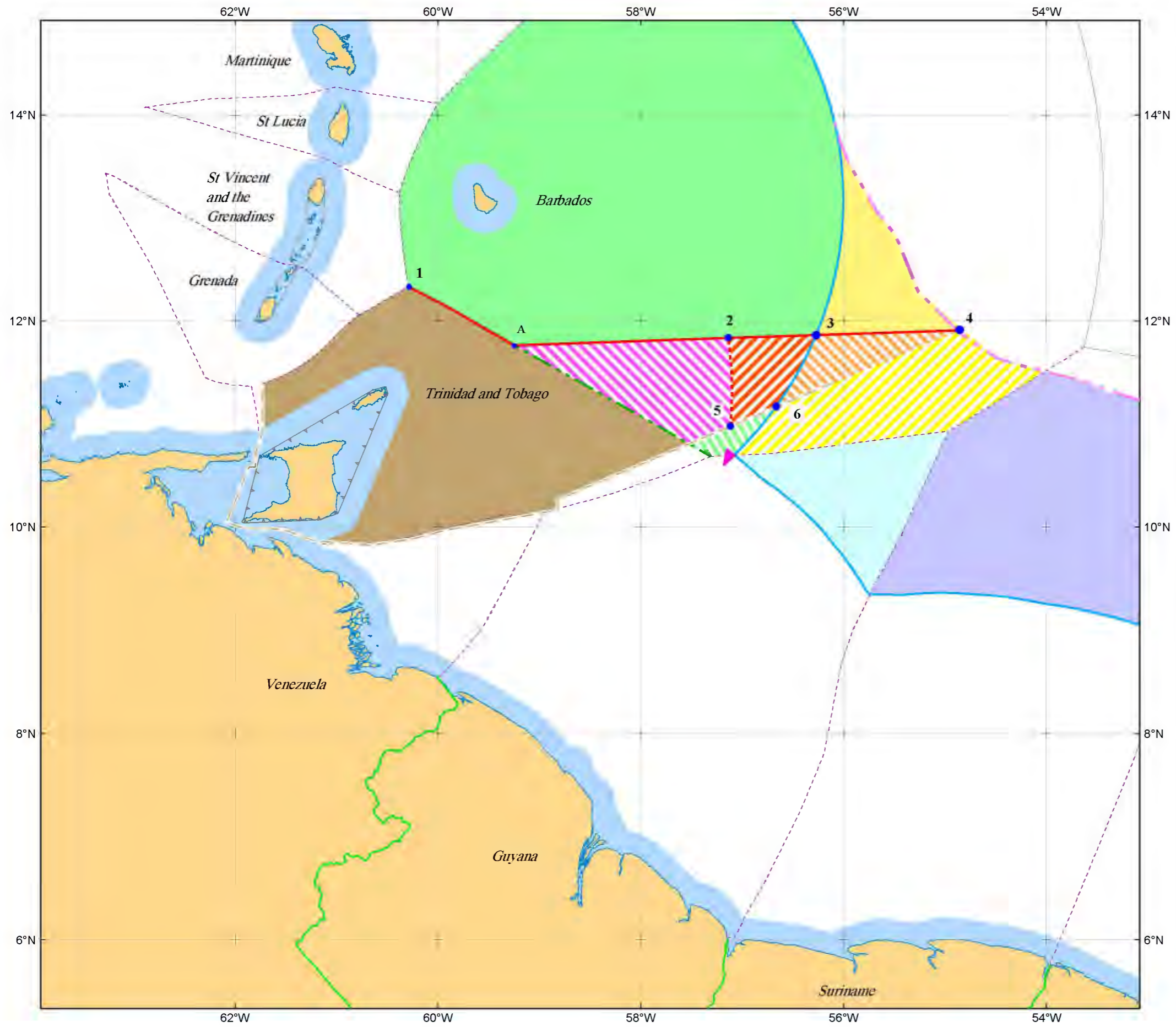
Legend

- Trinidad and Tobago's claim line
- - - Implied EEZ boundary claimed by Trinidad and Tobago
- - - Trinidad - Venezuela Agreement line
- - - Barbados - Trinidad and Tobago median line
- - - Other calculated median lines
- 200M EEZ limits
- - - 200M arc drawn from the archipelagic baseline of Trinidad and Tobago
- · - · Approximate outer limit of the continental shelf
- 350M extended continental shelf cut-off
- Barbados - Guyana EEZ Co-operation Zone
- Barbados' ECS area claimed by Trinidad and Tobago
- Barbados' EEZ, the seabed and subsoil of which is claimed by Trinidad and Tobago as its ECS area
- Barbados' EEZ north of the median line claimed by Trinidad and Tobago as its EEZ

Scale: 1 : 4,500,000  
 [at 12°N when printed at A3 size]  
 Projection: Mercator  
 Datum: WGS 84



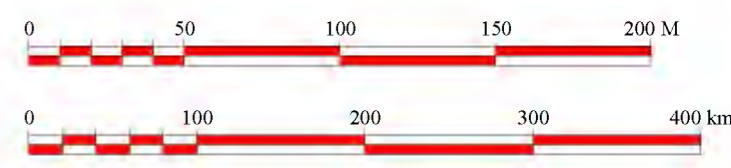
Map 3

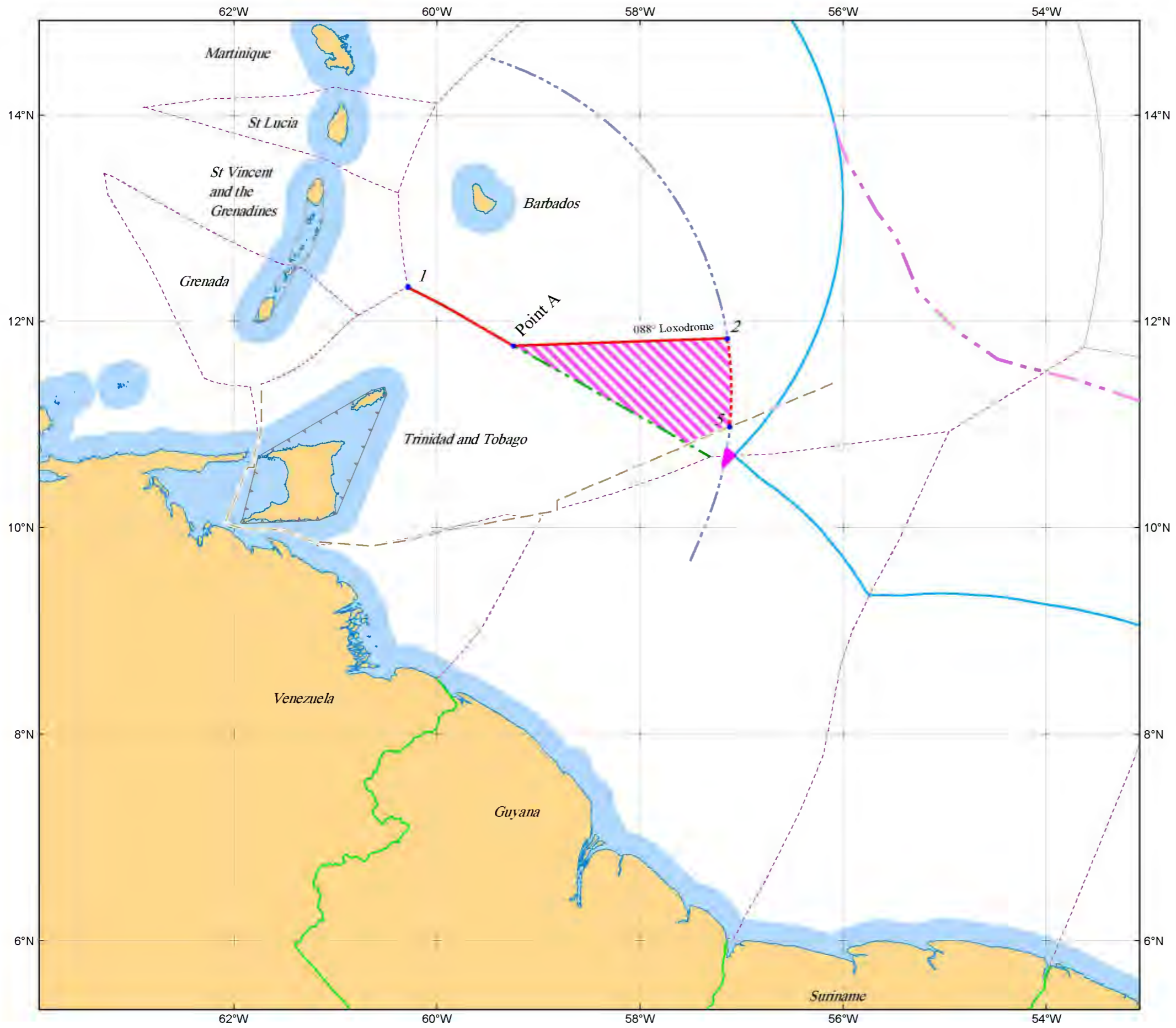


Map showing the maritime areas apparently created by Trinidad and Tobago's claim

- Legend**
- Barbados' EEZ north of Trinidad and Tobago's claim
  - Barbados' EEZ north of the median line not claimed by Trinidad and Tobago
  - Barbados' ECS north of Trinidad and Tobago's claim
  - Barbados' ECS south of Trinidad and Tobago's apparent ECS claim
  - Barbados' EEZ north of the median line claimed by Trinidad and Tobago as its EEZ
  - Barbados' EEZ north of the median line claimed by Trinidad and Tobago as its ECS
  - Barbados' ECS claimed by Trinidad and Tobago as its ECS
  - Trinidad and Tobago's claimed EEZ south of the median line
  - Guyana's ECS threatened by Venezuela
  - Suriname's ECS
  - Barbados - Guyana EEZ Co-operation Zone

Scale: 1 : 4,500,000  
[at 12°N when printed at A3 size]  
Projection: Mercator  
Datum: WGS 84



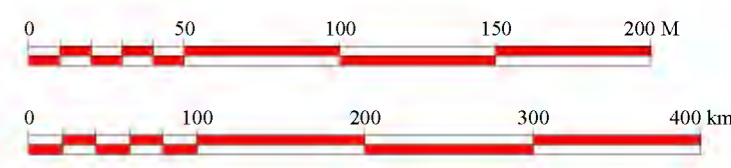


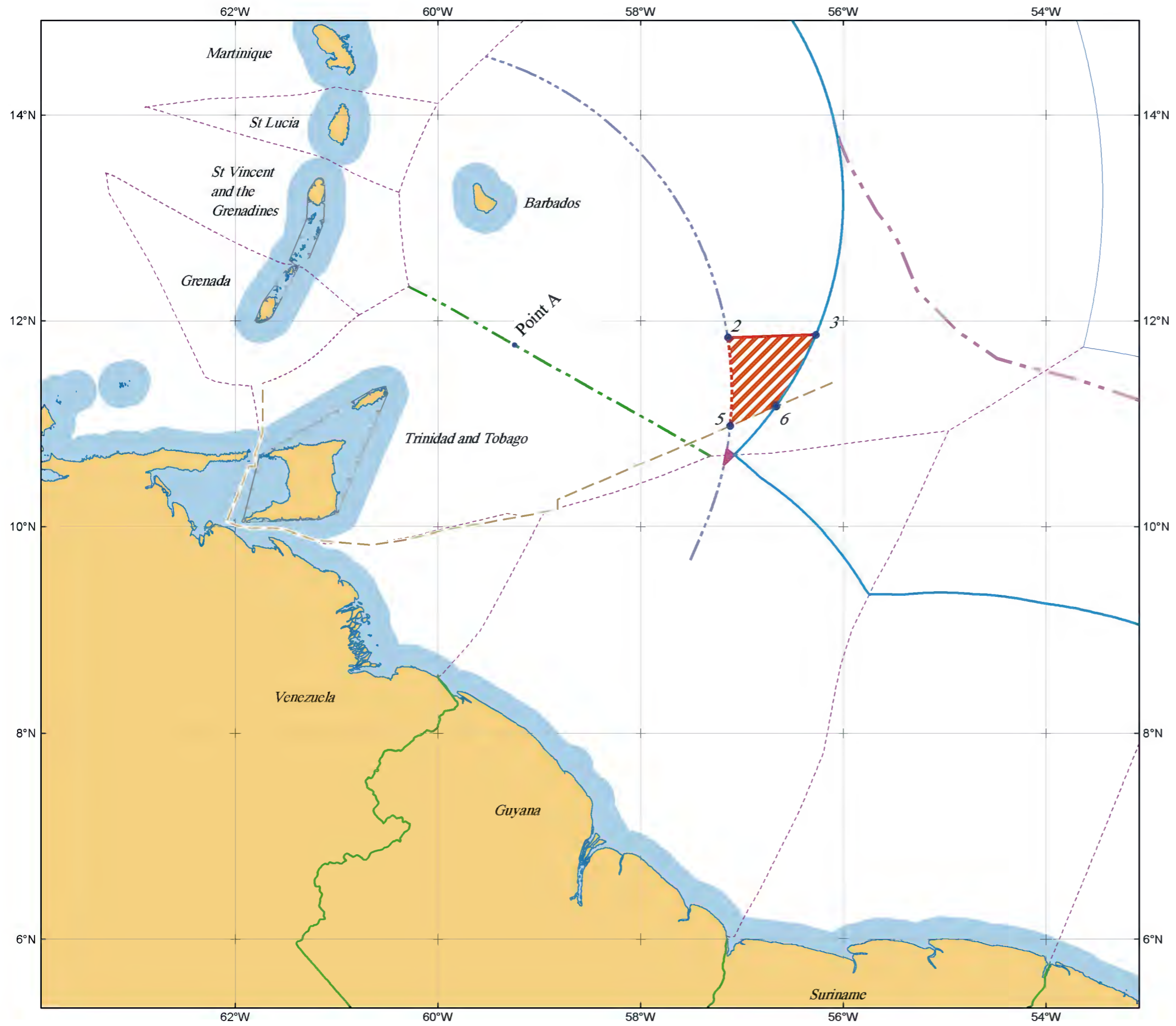
Map showing the EEZ boundary explicitly and implicitly claimed by Trinidad and Tobago

Legend

- Trinidad and Tobago's claim line
- Implied EEZ boundary claimed by Trinidad and Tobago
- Barbados' EEZ north of the median line claimed by Trinidad and Tobago as its EEZ
- Barbados - Trinidad and Tobago median line
- Trinidad - Venezuela Agreement line
- Other calculated median lines
- 200M EEZ limits
- 200M arc drawn from the archipelagic baseline of Trinidad and Tobago
- Approximate outer limit of the continental shelf
- 350M extended continental shelf cut-off
- Barbados - Guyana EEZ Co-operation Zone












Scale: 1 : 4,500,000  
[at 12°N when printed at A3 size]  
Projection: Mercator  
Datum: WGS 84





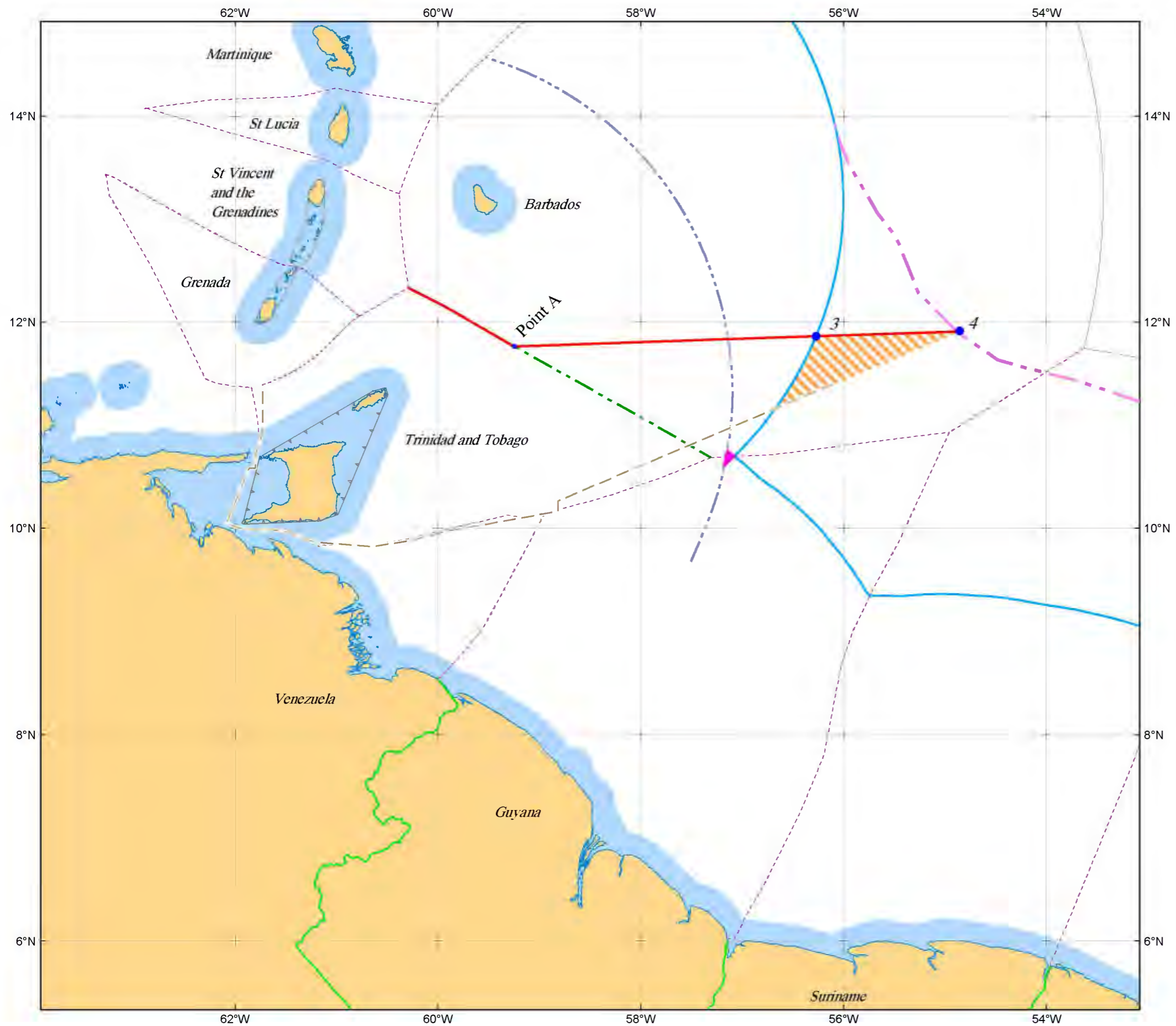
Map showing Trinidad and Tobago's claim to the seabed and subsoil in part of Barbados' EEZ beyond Trinidad and Tobago's EEZ

Legend

-  Barbados' EEZ, the seabed and subsoil of which is claimed by Trinidad and Tobago as its ECS
-  Trinidad and Tobago's claim line
-  Implied EEZ boundary claimed by Trinidad and Tobago
-  Barbados - Trinidad and Tobago median line
-  Trinidad - Venezuela Agreement line
-  Other calculated median lines
-  200M EEZ limits
-  200M arc drawn from the archipelagic baseline of Trinidad and Tobago
-  Approximate outer limit of the continental shelf
-  350M extended continental shelf cut-off
-  Barbados - Guyana EEZ Co-operation Zone










Scale: 1 : 4,500,000  
 [at 12°N when printed at A3 size]  
 Projection: Mercator  
 Datum: WGS 84





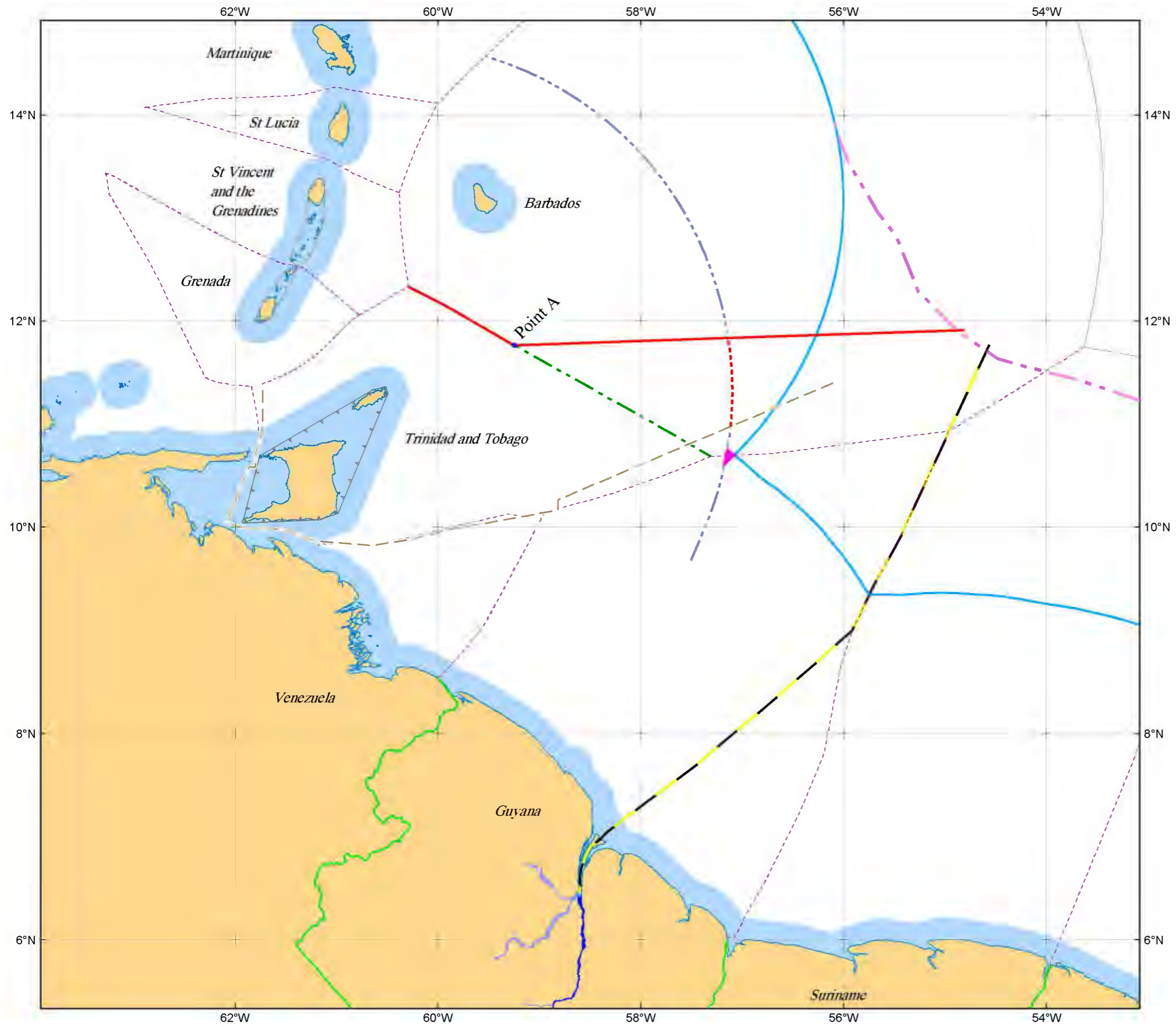
Map showing the extended continental shelf boundary claimed by Trinidad and Tobago

Legend

-  Barbados' ECS claimed by Trinidad and Tobago
-  Trinidad and Tobago's claim line
-  Barbados - Trinidad and Tobago median line
-  Other calculated median lines
-  Trinidad - Venezuela Agreement line
-  200M EEZ limits
-  200M arc drawn from the archipelagic baseline of Trinidad and Tobago
-  Approximate outer limit of the continental shelf
-  Barbados - Guyana EEZ Co-operation Zone

Scale: 1 : 4,500,000  
 [at 12°N when printed at A3 size]  
 Projection: Mercator  
 Datum: WGS 84





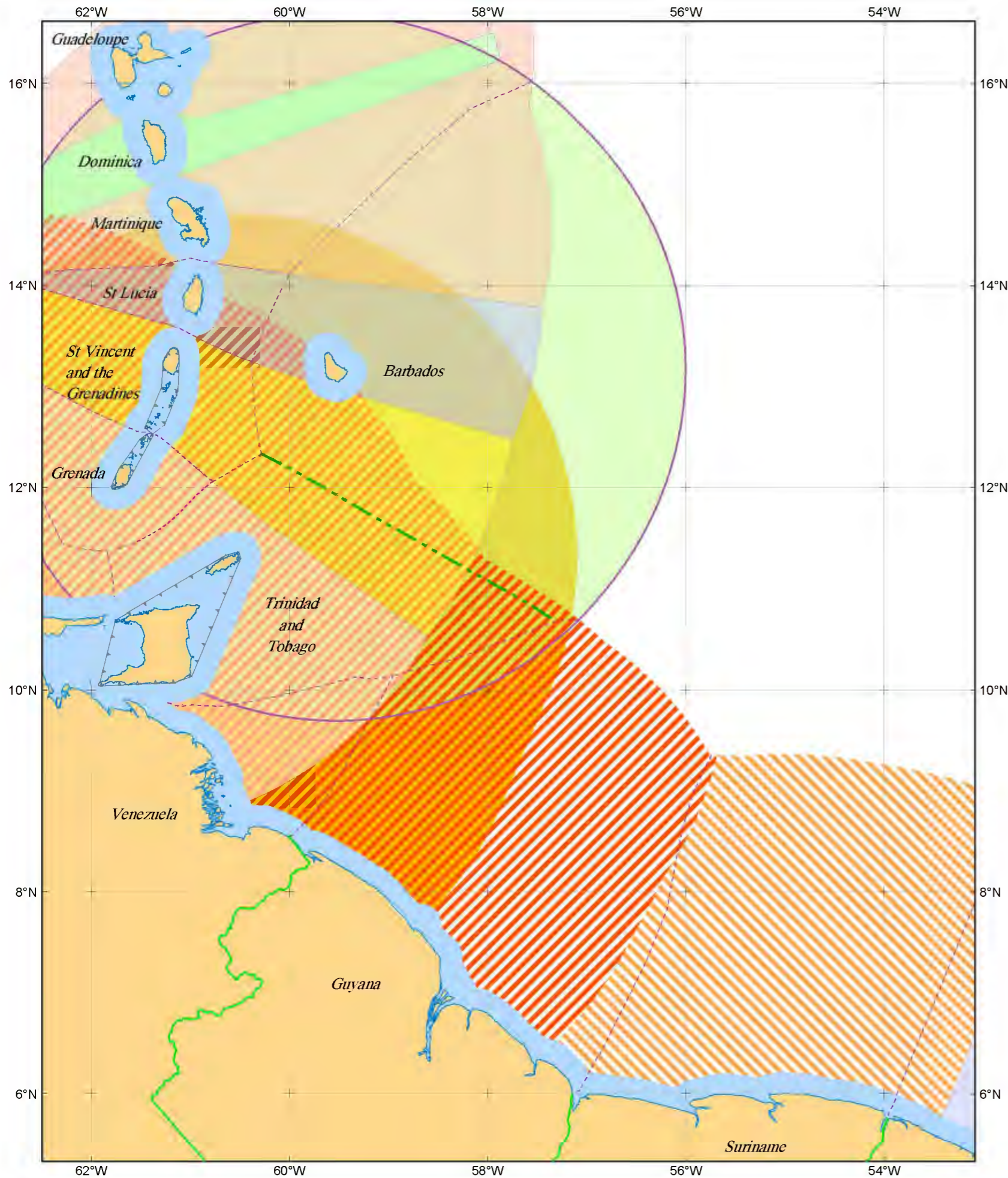
Map showing the relationship between the Trinidad - Venezuela Agreement line and Venezuela's land claims against Guyana

Legend

- Trinidad and Tobago's claim line
- - - Implied EEZ boundary claimed by Trinidad and Tobago
- · - Barbados - Trinidad and Tobago median line
- · - Other calculated median lines
- · - Possible equidistant delimitation line reflecting Venezuela's ambitions to Guyana's land territory
- - - Trinidad - Venezuela Agreement line
- - - 200M arc drawn from the archipelagic baseline of Trinidad and Tobago
- · - Approximate outer limit of the continental shelf
- Barbados - Guyana EEZ Co-operation Zone
- Essequibo river assumed to be Venezuela's preferred land boundary with Guyana

Scale: 1 : 4,500,000  
 [at 12°N when printed at A3 size]  
 Projection: Mercator  
 Datum: WGS 84



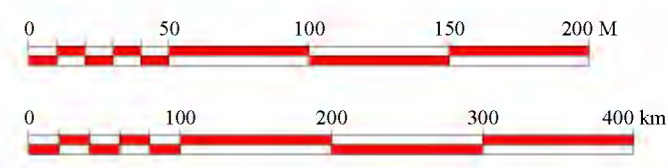


Map showing the extent of overlapping EEZ waters in the region

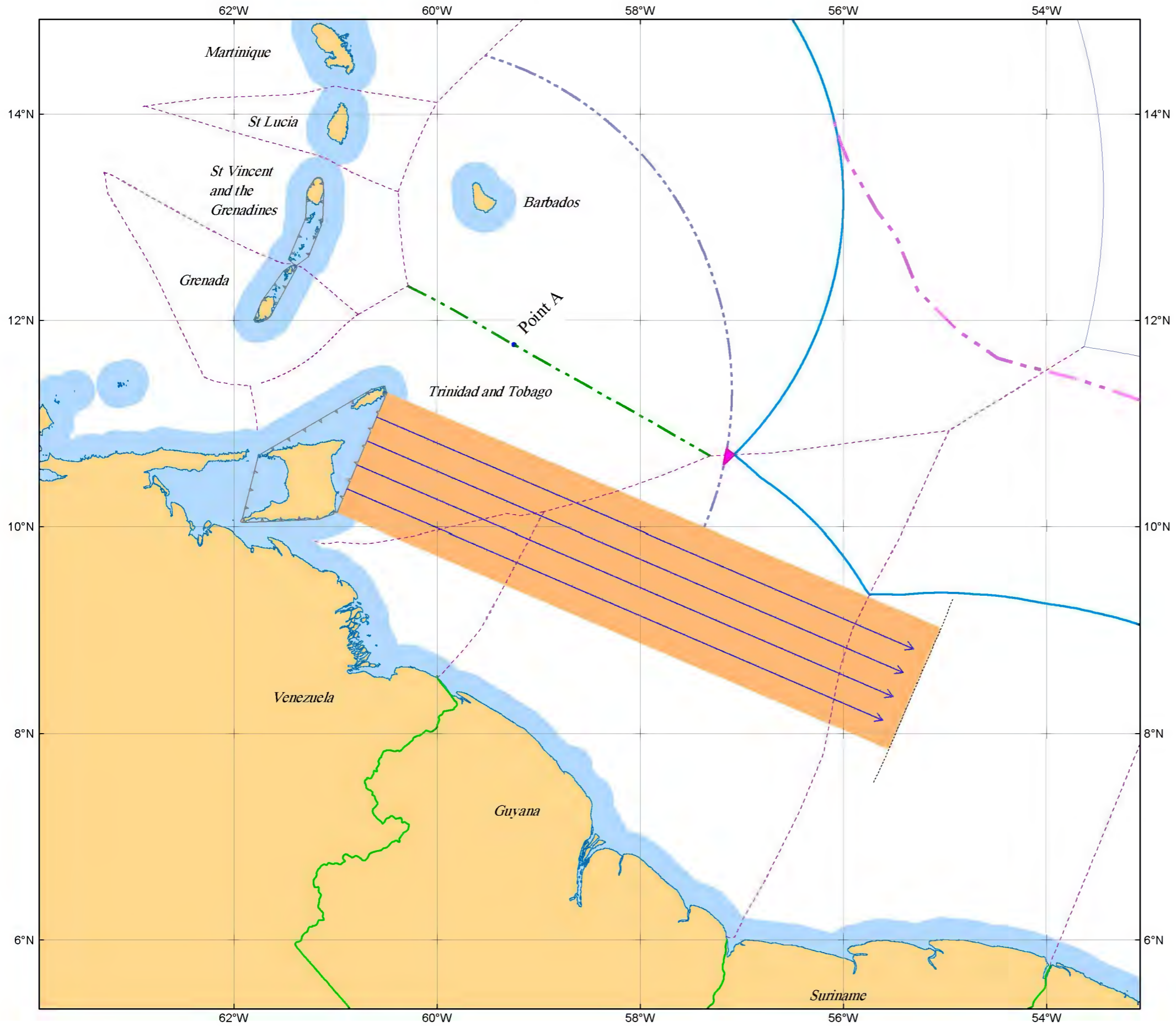
Legend

- Outline of maximum 200M claims for Windward Isles
- Barbados
- Trinidad and Tobago
- Guyana - Suriname combined EEZ
- Guyana - Venezuela combined EEZ
- Other calculated median lines

Scale: 1 : 5,000,000  
[at 12°N when printed at A3 size]  
Projection: Mercator  
Datum: WGS 84





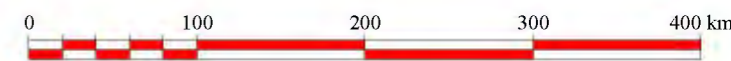
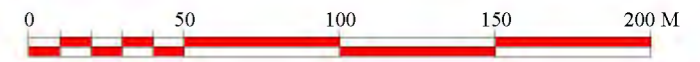


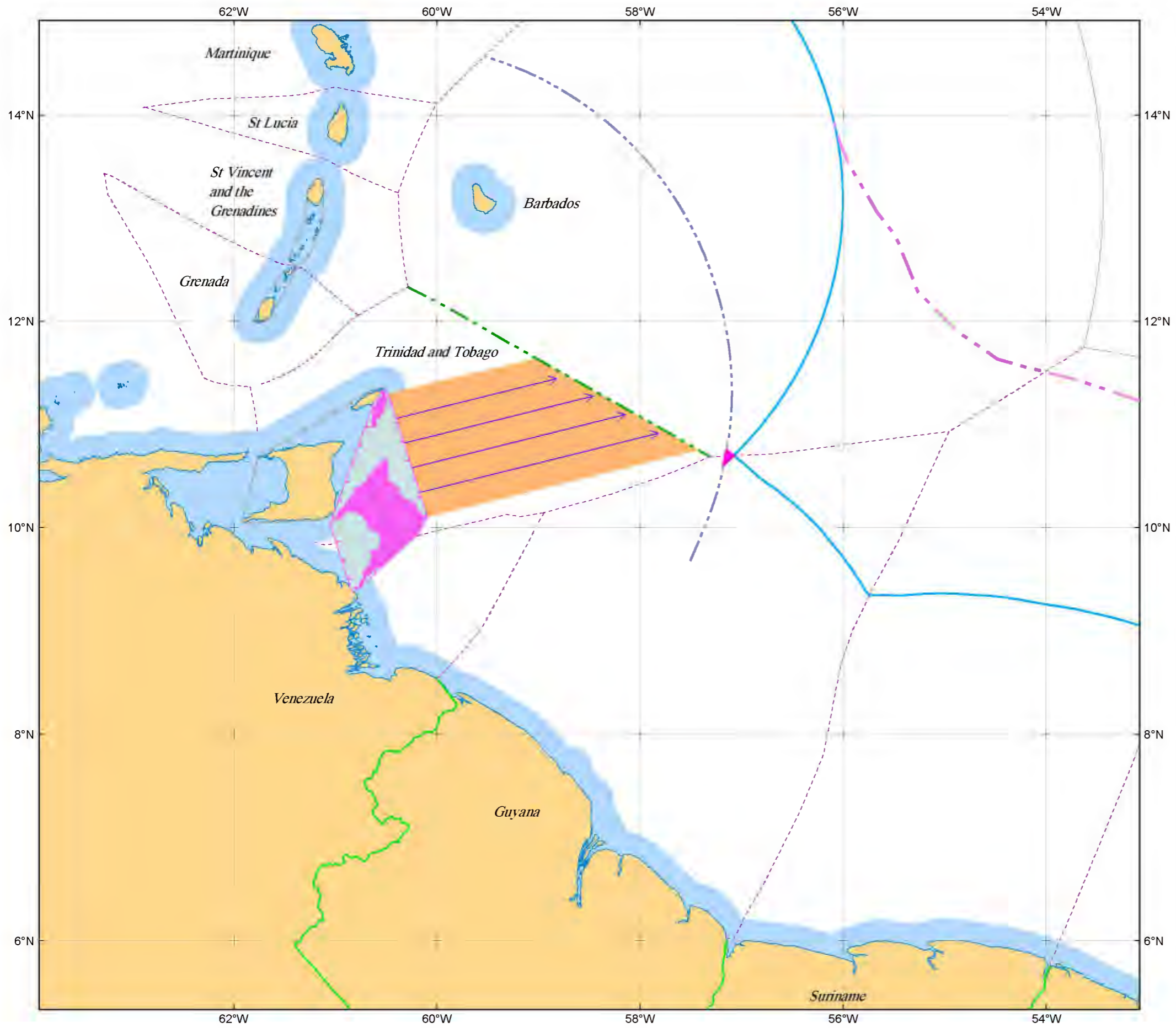
Map showing the frontal projection of Trinidad and Tobago's southeast facing baseline into the waters of Venezuela, Guyana and Suriname

Legend

- Barbados - Trinidad and Tobago median line
- Other calculated median lines
- 200M EEZ limits
- 200M arc drawn from the archipelagic baseline of Trinidad and Tobago
- Approximate outer limit of the continental shelf
- Trinidad and Tobago 350M arc
- Frontal projection of Trinidad and Tobago's archipelagic baseline

Scale: 1 : 4,500,000  
[at 12°N when printed at A3 size]  
Projection: Mercator  
Datum: WGS 84



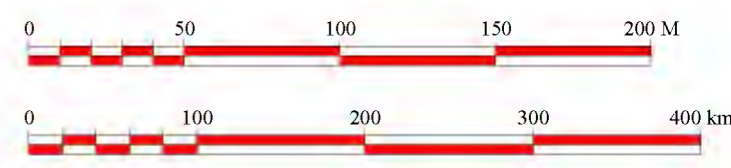


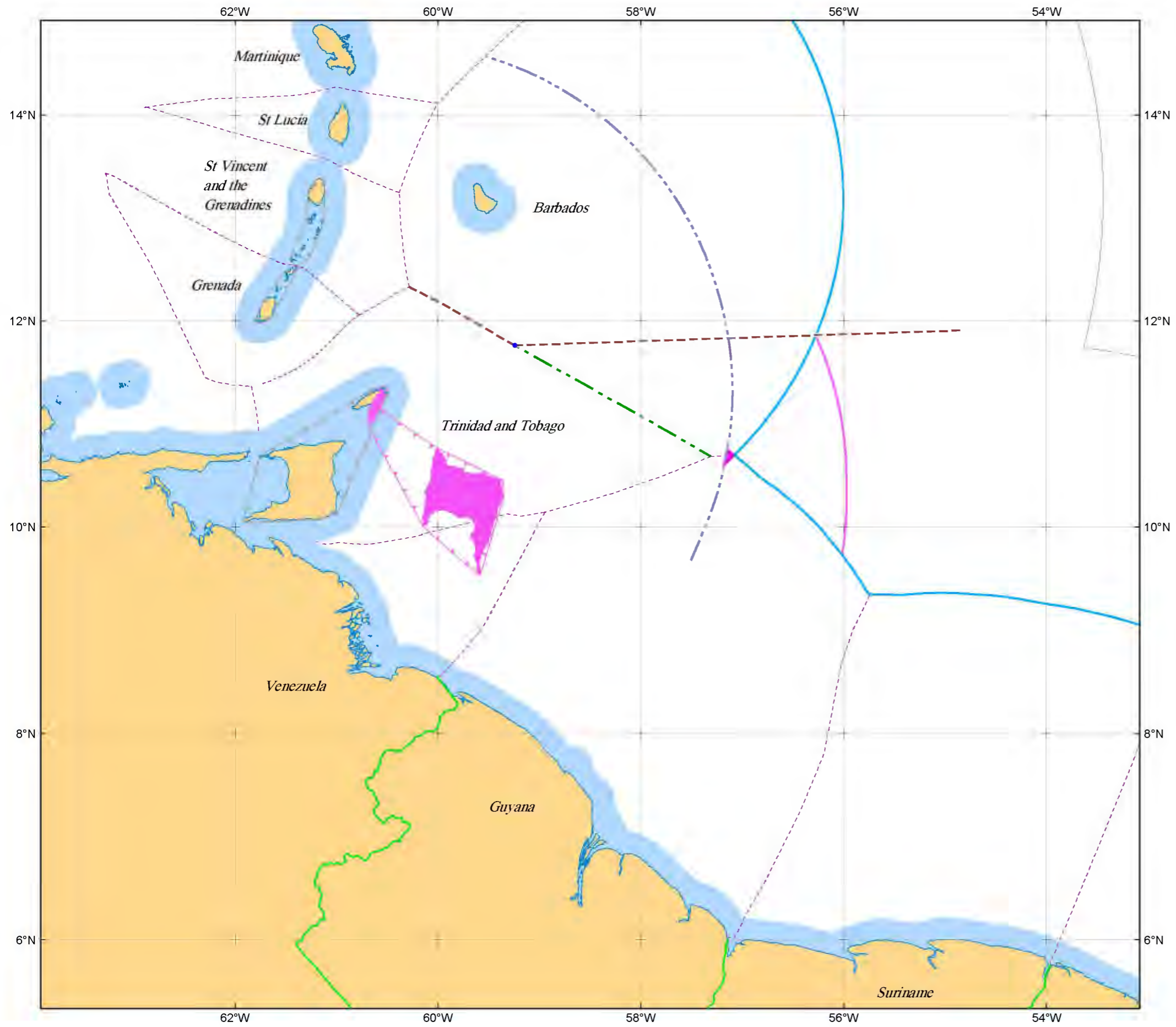
Map showing the Trinidad and Tobago archipelago rotated to the point at which the southeast facing leg of the archipelagic baseline begins to influence a median line calculation

Legend

- Barbados - Trinidad and Tobago median line
- Other calculated median lines
- 200M EEZ limits
- - - 200M arc drawn from the archipelagic baseline of Trinidad and Tobago
- Frontal projection of the rotated archipelagic baseline

Scale: 1 : 4,500,000  
[at 12°N when printed at A3 size]  
Projection: Mercator  
Datum: WGS 84





*Map showing the Trinidad and Tobago archipelago distorted to the point at which a median line with Barbados would coincide with the delimitation line now claimed by Trinidad and Tobago*

*The re-invented archipelago is generated initially by rotating the entire archipelago through 40°. The island of Trinidad is then rotated a further 33° and moved eastwards by 94M to create the shape of a fictitious archipelago that will generate a median line with Barbados that coincides with the Trinidad and Tobago claim line*

**Legend**

- - - Median line generated between the normal Barbados baseline and the distorted Trinidad and Tobago archipelagic baseline
- - - Median line generated by Parties coastal opposition (actual geography)
- ▲—▲—▲ Distorted Trinidad and Tobago archipelagic baseline
- 200M arc generated by distorted Trinidad and Tobago archipelagic baseline

Scale: 1 : 4,500,000  
 [at 12°N when printed at A3 size]  
 Projection: Mercator  
 Datum: WGS 84

